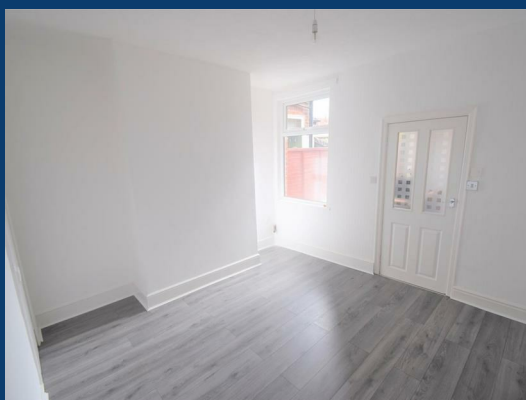
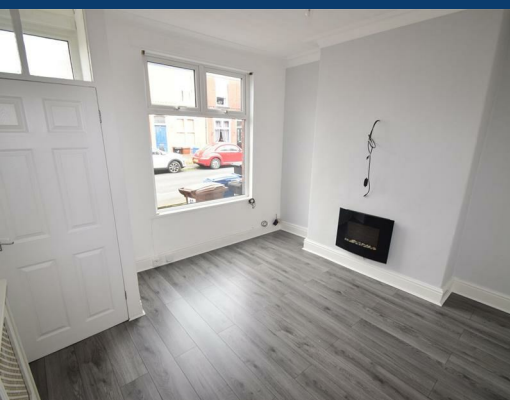




Holly Street

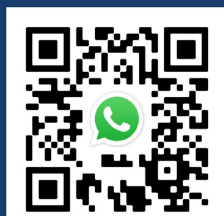
Stockport



£1,100 Per month

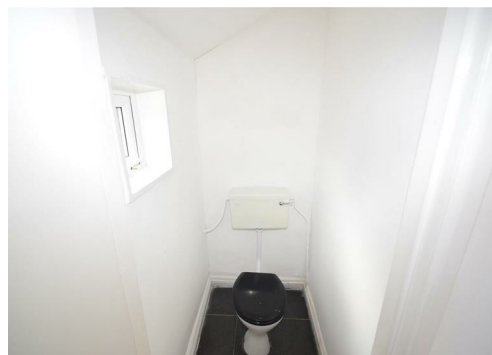


SEND US A
MESSAGE



SPENCER
HARVEY

PASSIONATE ABOUT PROPERTY



Energy Efficiency Rating		
	Current	Potential
Very energy efficient - lower running costs		
(92 plus) A		
(81-91) B		
(69-80) C		
(55-68) D		
(39-54) E	54	73
(21-38) F		
(1-20) G		
Not energy efficient - higher running costs		
England & Wales	EU Directive 2002/91/EC	

PROPERTY DESCRIPTION

Available December 2025 | Unfurnished | EPC Rating: D

This modern two-bedroom mid-terraced home is located in the popular area of Offerton and offers spacious, well-presented accommodation throughout.

The ground floor comprises two reception rooms, a separate fitted kitchen and a convenient downstairs WC. To the first floor, there are two generous double bedrooms and a large bathroom accessed from the main bedroom, fitted with a white three-piece suite and an electric shower over the bath.

Externally, the property features a private flagged rear yard that is not overlooked, providing an ideal outdoor space. The property benefits from modern flooring throughout and was recently renovated to a high standard.

KEY FEATURES

- Available December
- Ideal Location
- Bathroom is off the bedroom
- Private Garden
- Council Tax Band A

LET AVAILABLE DATE:

16th December 2025

DEPOSIT: £1,269

MIN TENANCY: Add Text

LET TYPE: Add Text

FURNISH TYPE: Unfurnished

EPC RATING:

E

COUNCIL TAX

BAND:

A

